

Prospectus

Inspiring Potential. Transforming Futures.
A supportive, aspirational online education for every learner



Department
for Education



THE
GOOD
SCHOOLS
GUIDE

Table of Contents

02	Welcome From Our Head of Teaching & Learning
03	Our Learners
03	Supporting SEND Learners
04	Our Educational Approach
05	Wellbeing
06	Key Offerings
08	Short-Term and Long-Term Provisions
09	Student Case Studies
10	Who We Partner With
11	LA Case Studies
12	Testimonials



Welcome From Our Head of Teaching & Learning

Every learner deserves an education that recognises who they are, their strengths, their interests, and their potential.

Since 1996, Nisai has partnered with families, schools, and local authorities to deliver high-quality, personalised online learning for students who need something different. At the heart of our approach is a commitment to both excellent academic outcomes and the development of confident, resilient learners.

We believe that education should inspire curiosity, foster self-belief, and prepare young people for life beyond the classroom. Our programmes are delivered by experienced teachers who know how to engage learners with meaningful, purposeful learning. Through interactive lessons and tailored support, students progress at a pace that's right for them and build the knowledge, skills, and confidence they need to succeed.

Nisai is more than a learning provider, we are a supportive community where every learner is known, valued, and encouraged. Alongside our core programme, students can take part in wellbeing initiatives, clubs, and societies that nurture personal interests, broaden horizons, and deepen connections with peers. These opportunities help create a balanced learning experience that stretches the mind and supports the whole person.

Our mission is simple: to provide a place to belong for those who may not thrive in mainstream settings. Every learner's story matters.

By combining strong academic standards with exceptional pastoral care, we help students re-engage with learning, build confidence, and achieve meaningful outcomes that open doors to future opportunities.

We look forward to welcoming you to Nisai.



Lesley Laws

Head of Teaching & Learning

Partnering with
over **135** Local
Authorities in
the UK

Founded in

1996

Students in

30+

Countries

Accredited by



Featured in:



Our Learners

Every learner arrives with a unique story. Our role is to listen, understand, and build a programme that works for them. Our learners are made up of those that are:



Educated at home or flexi-schooled



School refusers or at risk of exclusion



Have SEND, including ASC, ADHD, SEMH, anxiety, or medical needs



In alternative provision or awaiting placement requiring short-, medium-, or long-term educational support



Requiring flexibility for school to fit around their sports or other talent.

Supporting SEND Learners

- **Expert Teaching** - SEND-aware, small classes, short focused lessons, taught by ability
- **Specialist Staff** – Our teachers specialists in inclusive strategies, differentiation & learning difficulties
- **Dedicated Support Teams** – EHCP services, student & family support teams
- **Inclusive Learning Environment** – Flexible participation, lesson recordings, personalised access
- **Assistive Technologies** - Literacy & communication tools to build confidence & independence
- **Communication Options** – AAC methods for students with speech / communication needs

“Both innovative and inclusive, this professionally run ‘no pressure’ online school provides a beacon of hope to families whose children (most with SEND) have often given up hope of any education. A place where differences are celebrated, staff are happy and wellbeing is at the heart of everything they do. ‘Nisai were the only ones to understand – our son finally felt seen,’ said one mother.”

The Good Schools Guide

THE
GOOD
SCHOOLS
GUIDE

86%

of our UK students have a barrier to learning

59%

of our UK students have multiple barriers

85%

of our UK students have an EHCP

27%

of our UK students have a diagnosis of Autistic Spectrum Condition

69%

of our UK students have emotional or mental difficulties

Our Educational Approach

Nisai teachers: Passionate, student-centred, inclusive, and safeguarding-focused

Key Qualities of Nisai Teachers

- Inspire learning through engaging, effective lessons
- Adapt to diverse needs, including SEND
- Skilled with digital tools
- Collaborative & supportive
- Caring, professional, and focused on wellbeing

Our Teaching Practice

- Live, interactive lessons, (small class sizes, 30 or 60mins)
- Individual or hybrid learning with mentor support
- Recorded lessons, flexible access & independent work
- Wide digital resources & adaptive strategies
- Strong academic & pastoral support

Commitment to Quality

- Our teachers on average stay with us over 8 years
- Mandatory safeguarding & compliance training
- Regular CPD & observations
- Accredited with major exam boards
- Robust QA framework

96%

of our students successfully reintegrate back into mainstream, FE and employment

Quality assured

26x

this academic year by LAs and regulators

Students on long-term courses achieve

84%

teacher assessed engagement in lessons

Accredited exam boards



Wellbeing

Every learner matters and each learner is at the heart of everything we do. Guided by the Every Child Matters principles, we build wraparound support that nurtures wellbeing, achievement, and aspiration.

Wellbeing Centre

Grounded in Every Child Matters, our resources include:

-  **My Community:** Join societies and clubs via the online platform to interact with others and be part of a wider student community
-  **My Safety:** Online safety, hate crime awareness, street smarts
-  **My Health:** Healthy living, first aid and mindfulness
-  **My Future:** Careers, volunteering, apprenticeships, training

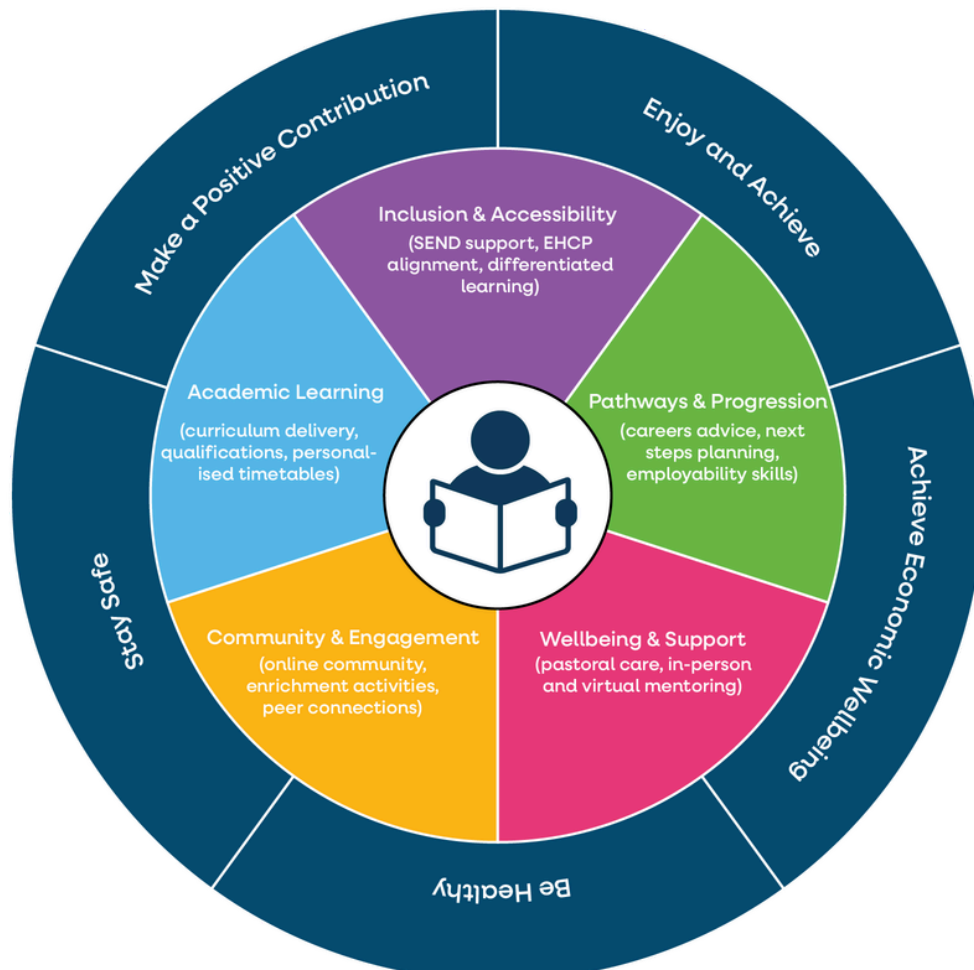
Future Planning

In partnership with **Unifrog**, students access expert tools and guidance for higher education, apprenticeships and careers, along with personalised support from a **Level 6 qualified careers advisor**.

For those who previously struggled, attendance increases from

22% to 78%

Through in-person and remote mentoring, SEND support, differentiated and personalised learning, an inclusive online community, and clear pathways into further education and employment, we create an environment where every learner can thrive.



Key Offerings

Live Online Teaching

At Nisai, we provide a **high-quality curriculum** based on the National Curriculum for England, recognised both in the UK and internationally. This ensures that all online school students receive a consistent, academically rigorous education that prepares them for formal qualifications and future study, **wherever they are in the world.**

We offer an academic pathway from **Key Stage 2 through to GCSE/International GCSE, Functional Skills, Passport to Work and A-levels.**

Inclusive, secure, and **personalised online learning** for every learner. Imagine the best parts of school: classrooms, subject specialists, dedicated support, **extra-curricular activities**, and form tutors, delivered online in a **safe, inclusive environment.** That's the Nisai Virtual Academy.

- Section 41 Approved by the **Department for Education**
- **Timetabled, teacher-led** lessons for learners referred by local authorities, schools, and parents
- A **secure, structured environment** designed for success

In-Person and Virtual Mentoring

At Nisai, we believe that every student thrives when they feel supported, understood, and valued. Our wellbeing and mentoring services are designed to strengthen both **academic progress and emotional growth.** We focus on the **connection** between learning, confidence, and mental health, helping young people develop the skills they need to navigate challenges at school and in life.

For students with **EHCPs**, mentoring helps them apply online learning to **real-world situations.** Mentors work alongside teaching staff to **complement** academic lessons with practical life skills, supporting independence, employability, and everyday responsibilities. **One-to-one** guidance also fosters confidence, communication, resilience, and self-awareness.

Together, our **Wellbeing and Mentoring** programmes create a safe space for students to build resilience, form positive relationships, and grow as **confident, independent learners.**



In-person mentoring

We're proud to offer one of the few in-person mentoring services in online education. Face-to-face sessions build trust, create genuine relationships, and provide tailored guidance that strengthens communication and confidence.



Virtual mentoring

Our virtual mentoring sessions offer the same structure and consistency online, ensuring all learners, wherever they are, can access support.

3.3x

Students more likely to succeed if online schooling is supplemented with mentoring

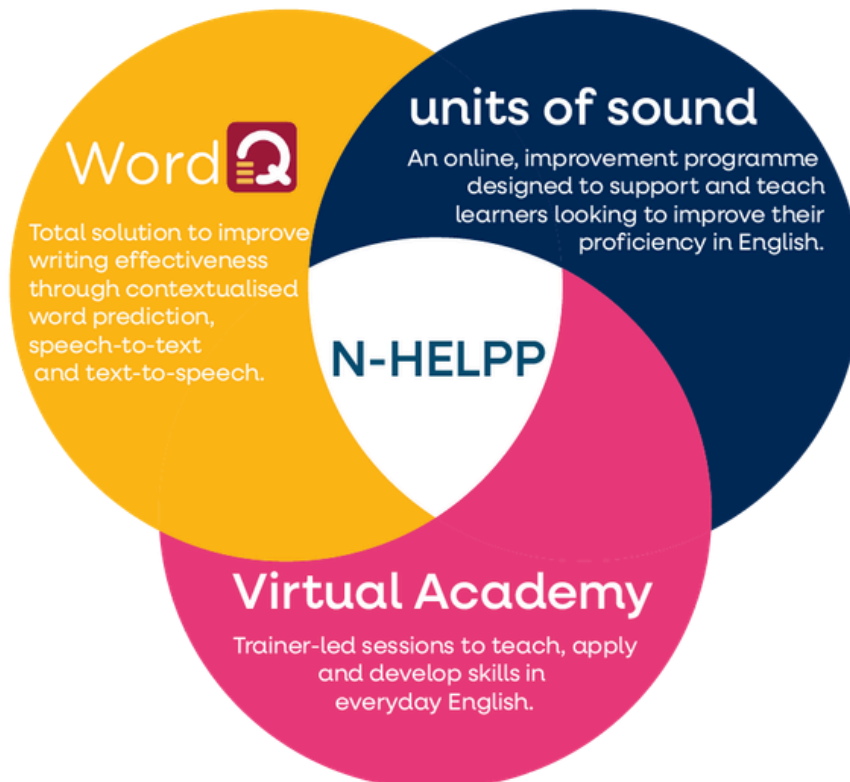
Key Offerings (continued)

English Language Proficiency

Nisai's Holistic English Learning Proficiency Programme (N-HELPP) brings together best practice of live teaching through the **Nisai Virtual Academy** in addition to the **Units of Sound** and **WordQ** software suites.

Learning English as a language provides the opportunity for students to learn everyday, **usable English** to aid communication. This supports in **building confidence and self-esteem** and develops the whole person rather than just knowledge.

Our **ESOL programme** equips students with the English skills they need to thrive in learning, connect confidently with the **community**, and progress towards employment or further education. It combines language development with practical **employability skills** to prepare students for success in the workplace and beyond.



Professional Development

At Nisai Professional Development Institute (NPDI), training goes beyond traditional courses. Each programme is designed to equip learners with practical tools that **improve job performance**, boost **confidence**, and strengthen **communication** and **leadership skills**.

- **Education & Training Qualifications** for aspiring or current educators
- **NOCN accredited** Level 3 & 4 qualifications (Trainers, Verifiers, Assessors)
- **CPD workshops** & professional development pathways
- **Sector-specific programmes** (hospitality, health, agriculture, etc)
- **Employer-focused training:** upskilling, retention, employability support

Short-Term Provision

Our short-term core curriculum is suitable for students who, for whatever reason, need to continue studying on a short-term basis away from a mainstream classroom.

- **1 hour live**, teacher-led lessons in English, Mathematics and Science available Monday to Friday
- Choose from **1 day up to 10 weeks**
- Available from **upper KS2 to KS4**
- **Quick turnaround/set up** - if we receive a referral by 4pm the student can access their lessons the following day
- **Attendance, contribution and engagement (ACE)** will be monitored and reported on within every lesson
- **Teachers update** the notes to cover what has been achieved



Length of Course

1 Day - 10 Weeks



Quick Enrolment

Access lessons the next day



- English
- Mathematics
- Science

Long-Term Provision

Our long-term curriculum covers KS2 through to KS5 and enables students to study a **variety of subjects** as well as supporting them with **reintegration** or preparing them for their chosen pathway - whether this is **college, university, apprenticeships or employment**.

99%

GCSE pass rates
over the last 3
years

96%

of our students
successfully
reintegrate back into
mainstream, FE and
employment



KS2 - Foundation of Excellence

Gives Year 6 learners the strongest possible start in life. Our Foundation of Excellence programme offers focused courses in English, Maths and Science, aligned with the national curriculum. It builds a **solid academic base** for secondary education while deepening subject knowledge, strengthening **essential skills and inspiring independent thinking**.

KS3 Curriculum

KS3 covers the first three years of secondary education, providing a **broad and balanced curriculum** that builds foundational knowledge and skills across subjects, preparing students for KS4 and beyond.

KS4 Curriculum

Our KS4 curriculum prepares learners for **GCSEs and Functional Skills**, building the knowledge and practical skills needed for future success.

KS5 Curriculum

Our KS5 curriculum offers advanced pathways through **A Levels and vocational options**, equipping learners with the knowledge and skills needed for higher education, apprenticeships and future careers.

Build Skills for Life - Accredited Courses

Students can gain practical knowledge and **recognised qualifications** to support learning, work, and everyday life, including Digital Skills, ESOL, Employability.

[Click here to see our course list](#)

Student Case Study

Eden's Story: From Isolation to Inspiration

Background

- Struggled in traditional school; social interactions overwhelming
- Confidence at an all-time low
- Unsure about online education initially

Nisai Support

- Flexible online learning – choose when/how to engage
- Tailored mentoring: Nisai mentor visits twice a week for emotional and social support
- Academic lessons designed to be manageable and supportive

Outcomes

- Re-engaged with education
- Online learning and mentoring rebuilt his confidence
- Felt supported by teachers and mentor
- Gained independence and social skills
- Applied to Chesterfield College, Engineering Level 2
- Self-esteem and confidence significantly improved
- Received Nisai award at the House of Lords
- Excited about future opportunities in education and work

Student Case Study

Overcoming Barriers: Evie's Path to GCSE Success

Background

- Diagnosed with:
 - Asperger's Syndrome
 - Motor Dyspraxia
 - ME / CFS
- Experiences: OCD-related anxieties, sensitivities, and auditory processing difficulties
- Difficulty coping in traditional classroom settings
- Prior placement: small independent school, required taxi travel outside local authority area (~£60k/year)
- Attendance: unable to access education due to transportation and class environment

Nisai Support

- In-person mentoring + online studies
- Social and wellbeing support
- Nisai provision cost effective (60% less than the prior placement)

Outcomes

- Re-engaged with education
- Improved mental health
- Travelled independently with mentor from South Yorkshire to London

Evie's GCSE Results

English Language: 9
 English Literature: 7
 Psychology: 9
 Economics: 8
 Mathematics: 5

Who We Partner With

Local Authorities and Virtual Schools

Nisai works with over **130 Local Authorities** across England and Wales, providing flexible, **DfE-accredited** online education, including **6th-day provision**, for students unable to attend school due to medical, mental health or other challenges.

As an approved provider, we meet rigorous quality standards and feature on more than **30 frameworks**, ensuring trusted support for vulnerable learners.

Pupil Referral Units, Alternative Provision and Other Settings

Nisai partners with PRUs and other alternative settings to deliver high-quality, academically focused programmes. Our flexible approach helps settings:

- **Free Up Resources** – More time for pastoral and vocational support
- **Increase Capacity** – Support more students without compromising quality
- **Expand Opportunities** – Broaden academic options for learners
- **Support Diverse Abilities** – Adaptive lessons tailored to individual needs

Multi-Academy Trusts

Nisai offers tailored services for MATs, including:

- **Consultation** – Strategic planning and bespoke visits
- **Quality Assurance** – Joint QA with leadership teams
- **Cost Efficiency** – Aggregate orders for savings
- **Flexibility** – Adapt subjects and timetables as needed
- **Monitoring** – Track engagement and attendance online
- **Induction** – Large-group sessions with ongoing support
- **Control** – Manage pupils easily across schools
- **Training** – Custom mentor training for staff



[Click here to see our hybrid models](#)

Delivery Models You Can Commission

Nisai supports three commissioning patterns. Many commissioners blend these models across a cohort, so that each learner receives an appropriate package without creating unnecessary complexity.

Model A: Nisai Learning Zone (on-site supervised access)

A supervised on-site space where learners access Nisai lessons and assigned work, supported by on-site staff and where required, Nisai mentors. This model is particularly effective where learners benefit from routine, safe supervision, and a structured bridge back into wider school life.

Model B: Hybrid day model (online curriculum + on-site wraparound)

Nisai delivers the curriculum through live online lessons (and recordings for flexibility). The setting provides wraparound provision such as SEMH support, PSHE, therapeutic inputs, enrichment, practical learning, wider curriculum and reintegration activity.

Model C: Flexible timetable (home and site blend)

Designed for learners with EBSA/EBSNA, medical needs or significant anxiety barriers. Learners access live and recorded sessions to build confidence and consistency, while the setting uses planned in-person touchpoints to support gradual reintegration and social connection.

Quality assured

26x

this academic year
by LAs and regulators

LA Case Study

Local Authority in North-West

- **Centrally controlled** provision requisition
- The Local Authority **controls the spend**
- Request for provision comes from the school or the 3rd party provider
- Request includes previous initiatives used
- **Budget** held by the Local Authority
- Local Authority agree provision and inform Nisai
- Referee makes the online referral – deduction of funds made centrally
- Local Authority **retains control** and has view of which provider is using what
- Easier to **retain learners** when kept in school on a complementary curriculum



LA Case Study

LA /College Case Study – To Meet Rising EHCP Learners

- A lack of and high costs of specialist provision
- LA partnering with local college over **multiple sites**
- Nisai create an **onsite learning zone** where mentors are based
- College prepare **personalised package** including mentor and online support from Nisai
- Personalisation includes 3rd party provider with Nisai delivering functional maths & English
- Focus on **engagement & transition**
- Onsite zone acts as a mentor station plus **physical transition point**
- Separate area where learners can access Nisai programmes or **socialisation activities**

“The Nisai team are wonderful, so helpful and quick to respond to questions and always providing correct and thorough info. They are a pleasure to work with”

**SEND Manager –
Cheshire East Council**

Testimonials

"My son studied for 4 years in Nisai, from his IGCSEs to his A Levels, and they were some of our most enjoyable years of schooling..."

P. Briccocola (parent)

"Excellent school especially for my daughter who has Contamination OCD, ASC, depression and anxiety...Nisai is an invaluable option for the education of some children who would otherwise be excluded, become NEET and miss the opportunity to achieve their potential due to their illnesses, or neurodiversity. Long may it continue!"

Sam (parent)

"Staff at Nisai have their learners at the centre of all they do. It is a setting of hope and aspiration. An organisation that is dedicated to developing and enhancing inclusive practice..."

IQM Evaluation

"I cannot speak more highly of Nisai. They have absolutely transformed the life of my son and our whole family..."

**A. Ellerton
(parent)**

"Nisai have been a brilliant alternative education provider when our son was too ill to attend a mainstream school...Nisai supported us as parents, too...Our son was able to achieve the qualifications he needed to move on and go to college...It was absolutely brilliant to watch him achieve so much with the help of Nisai. Thank you - we will always be grateful to the whole staff team at Nisai for their care and support."

**G Cummins
(parent)**

"Leadership and management at Nisai are outstanding — a visionary, pupil-centred team turning strategy into practice, driving continuous improvement, and fostering an inclusive culture where every learner can thrive."

**Graeme Pyle – School Improvement
Partner**

"All at Nisai have been exemplary in supporting my daughter both professionally and with empathy for her condition. She has enjoyed her learning and has prospered well in an anxiety free learning environment..."

**T McDevitt
(parent)**

"I had lessons online due to my autism and ADHD. We also did lesson about everyday life and learning basic skills like cooking. I never used to leave the house. Since being with Nisai I am now prepared for college and the rest of my future."

N Byrne (student)

Book a Free Taster Session:

[Click Here](#)

For all other enquiries, contact:

0208 424 8475

learning.services@nisai.com



Department
for Education



THE
GOOD
SCHOOLS
GUIDE

 4th Floor, 28 Clarendon Road,
Watford, WD17 1JJ

 0208 424 8475

 learning.services@nisai.com

 www.nisai.com

 **Nisai Learning**

 **@nisailearninguk**

 **Nisai Learning**

 **@NisaiLearning**

 **@NisaiLearning**